



Efficiency and reliability, every day!

WALL BOILER STORAGE TANKS

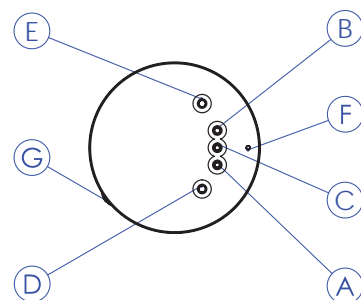
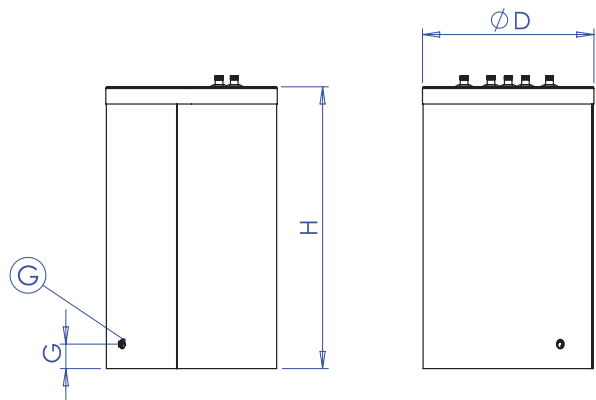
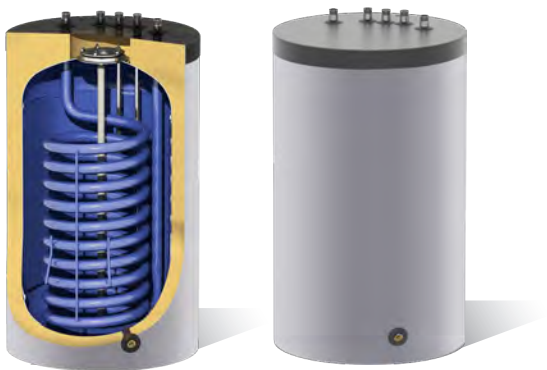
120 - 160Lt



| MODEL | | 120LT Ø600 | 160LT Ø600 |
|--------------------------------------|----------------|---------------|---------------|
| Capacity | Lt | 117 | 154 |
| Net Weight | kg | 58 | 72 |
| Insulation | mm | 45 | 45 |
| Heat Exchanger surface | m ² | 0,9 | 1,12 |
| Heat Exchanger capacity | Lt | 6 | 7,5 |
| Heat Exchanger output (60-80°C) | kW | 29 | 31 |
| DHW Continuous flow rate (60-80°C) | L/h | 568 | 645 |
| Heat losses ΔT 45K | kWh/24h | 1 | 1,2 |
| Energy efficiency class | | B | B |
| Maximum operational temperature | °C | 95 | 95 |
| Rated pressure | bar | 8 | 8 |
| Rated pressure of the heat exchanger | bar | 6 | 6 |
| NL factor | | 3,6 | 6,4 |

| MODEL | | | 120LT Ø600 | 160LT Ø600 |
|-------------------|-------|----|---------------|---------------|
| External diameter | D ext | mm | 590 | 590 |
| Internal diameter | D int | mm | 500 | 500 |
| Height | H | mm | 788 | 982 |
| Drain | G | mm | 90 | 90 |

| MODEL | | 120LT Ø600 | 160LT Ø600 |
|------------------|---|---------------|---------------|
| Cold water inlet | A | M 3/4" | M 3/4" |
| Hot water outlet | B | M 3/4" | M 3/4" |
| Recirculation | C | M 3/4" | M 3/4" |
| HE outlet | D | M 3/4" | M 3/4" |
| HE inlet | E | M 3/4" | M 3/4" |
| Drain | G | F 1/2" | F 1/2" |
| Sensor Socket | F | Ø9 | Ø9 |



Efficiency and reliability, every day!

WALL BOILER STORAGE TANKS

120 - 160Lt

NOBEL INTERNATIONAL EAD
SOLAR WATER HEATING SYSTEMS INDUSTRY

48 Vitosha Blvd., Elin Pelin 2100 - Sofia Region, Bulgaria
Tel.: +359 2 4210232 email: info@nobel.bg

www.nobel.bg

